

BALDOR® • RELIANCE 

Product Information Packet

ZDWNM3707T

5HP, 1760RPM, 3PH, 60HZ, 213TC, 3734M, TENV, F1

Part Detail							
Revision:	Z	Status:	PRD/A	Change #:		Proprietary:	No
Type:	AC	Elec. Spec:	37WGY153	CD Diagram:	CD0005	Mfg Plant:	
Mech. Spec:	37H311	Layout:	37LYH311	Poles:	04	Created Date:	
Base:	RG	Eff. Date:	09-06-2019	Leads:	9#14		

Specs			
Catalog Number:	ZDWNM3707T	Inverter Code:	Inverter Duty
Enclosure:	TENV	KVA Code:	H
Frame:	213TC	Lifting Lugs:	Standard Lifting Lugs
Frame Material:	Steel	Locked Bearing Indicator:	Locked Bearing
Output @ Frequency:	5.000 HP @ 60 HZ	Motor Lead Quantity/Wire Size:	9 @ 14 AWG
Synchronous Speed @ Frequency:	1800 RPM @ 60 HZ	Motor Lead Exit:	Ko Box
Voltage @ Frequency:	230.0 V @ 60 HZ	Motor Lead Termination:	Flying Leads
	460.0 V @ 60 HZ	Motor Type:	3734M
XP Class and Group:	None	Mounting Arrangement:	F1
XP Division:	Not Applicable	Power Factor:	78
Agency Approvals:	UR	Product Family:	Wash Down
	CSA	Pulley End Bearing Type:	Sealed Bearing
Auxillary Box:	No Auxillary Box	Pulley Face Code:	C-Face
Auxillary Box Lead Termination:	None	Pulley Shaft Indicator:	Standard
Base Indicator:	Rigid	Rodent Screen:	None
Bearing Grease Type:	Polyrex EM (-20F +300F)	RoHS Status:	ROHS COMPLIANT
Blower:	None	Shaft Extension Location:	Pulley End
Current @ Voltage:	13.400 A @ 230.0 V	Shaft Ground Indicator:	No Shaft Grounding

	6.700 A @ 460.0 V	Shaft Rotation:	Reversible
Design Code:	B	Shaft Slinger Indicator:	Shaft Slinger
Drip Cover:	No Drip Cover	Speed Code:	Single Speed
Duty Rating:	CONT	Motor Standards:	NEMA
Electrically Isolated Bearing:	Not Electrically Isolated	Starting Method:	Direct on line
Feedback Device:	ENCODER	Thermal Device - Bearing:	None
Front Face Code:	Encoder/Feedback Device	Thermal Device - Winding:	Normally Closed Thermostat
Front Shaft Indicator:	None	Vibration Sensor Indicator:	No Vibration Sensor
Heater Indicator:	No Heater	Winding Thermal 1:	None
Insulation Class:	H	Winding Thermal 2:	None

Nameplate NP1609L	
CAT NO	ZDWNM3707T
SPEC.	37H311Y153Z2
FRAME	213TC HP 5 TE
VOLTS	230/460
MAG CUR	6.8/3.4 FLA 13.4/6.7
RPM	1760 RPM MAX 6000
HZ	60 PH 3 CLASS H
SER.F.	1.00 DES B SL HZ 1.16
NEMA-NOM-EFF	89.5 WK2 0.71
BLWR V	PH HZ A
RATING	40C AMB-CONT
DE BRG	6307 ODE BRG 6206
CC	010A SER.NO

Parts List		
Part Number	Description	Quantity
SA084513	SA 37H311Y153Z2	1.000 EA
RA077679	RA 37H311Y153Z2	1.000 EA
HW3200A01	3/8-16X3/4 I-BLT WELDED F/S	1.000 EA
37CB3005A04W	CASTING W/.75 NPT@6(MACH WHITE)	1.000 EA
37GS1015	GASKET, FOR 37 WD KOBX'S (SANTOPRENE)	1.000 EA
51XW2520A12	.25-20 X .75, TAPTITE II, HEX WSHR SLTD	2.000 EA
HA5027A01	HA4066A01 T-DRAIN X2 BAGGED	1.000 EA
11XW1032G06	10-32 X .38, TAPTITE II, HEX WSHR SLTD U	1.000 EA
37EP3101B18MW	FRONT TENV L&M 206 BRG WD W/ SEAL & THRU	1.000 EA
HW4032A01	BLACK DRAIN PLUG FOR WASH DOWN MOTORS	3.000 EA
HW4600B50	SEAL 1.156 X 1.874 X 0.250 SINGLE LIP DB	1.000 EA
HW5100A06	W2420-025 WVY WSHR (WB)	1.000 EA
37EP3300A23MW	WHITE EPOXY EP MACH COMPL	1.000 EA
HW4032A01	BLACK DRAIN PLUG FOR WASH DOWN MOTORS	3.000 EA
HW4600B51	SEAL 1.375 X 2.125 X 0.313 SINGLE LIP DB	1.000 EA
10XN2520S30	1/4-20 X 1 7/8 HEX HEAD SS	4.000 EA
XY3118S12	5/16-18 HEX NUT, STAINLESS STEEL	4.000 EA
10XN2520S08	SCREW, 1/4-20 X 1/2 HHCS SS	2.000 EA
35FH4801W	THRU-SHAFT ENCODER COVER INV/VEC F1 & F2	1.000 EA
10XN2520S08	SCREW, 1/4-20 X 1/2 HHCS SS	4.000 EA
37CB4512	CONDUIT BOX LID FOR WASHDOWN 37 FRAME	1.000 EA
37GS1008A02	37 GS FOR CB LID - WHITE NEOPRENE	1.000 EA
59XN0832S07	8/32 X 7/16 HX WS HD SER X	4.000 EA
HW4600B33	V-RING SLINGER 1.375 X 1.890 X .35 VITON	1.000 EA

Parts List (continued)		
Part Number	Description	Quantity
HW2502F21	#303 SS,SQ KEY 5/16 X 2.375	1.000 EA
HA7000A02	KEY RETAINER RING, 1 1/8 DIA, 1 3/8 DIA	1.000 EA
MJ5004A05	#242-21 LOCTITE GENERAL PURPOSE MED. STR	0.005 EA
LB1115N	LABEL,LIFTING DEVICE (ON ROLLS)	1.000 EA
LB1164	LABEL,WARNING AND DRAIN	1.000 EA
MJ1000A02	GREASE, MOBIL POLYREX EM - 124047	0.050 LB
OE5011A05SP	HS25 ENCODER ASSY - TENV	1.000 EA
MG1025Z02	ACTIVATOR WILKOFASST 060.02HF	0.010 GA
MG1025W01	WILKOFASST, 781.01, SIGNAL WHITE #9003	0.028 GA
HA3104S14	300UBOLT 12.125LG SS	4.000 EA
MJ5001A27	32220KN GRAY SEALER *MIN BUY 4 QTS=1GAL	0.001 QT
85XU0407S04	4X1/4 U DRIVE PIN STAINLESS	2.000 EA
LC0145B01	CONNECTION LABEL	1.000 EA
NP1609L	SS WD VEC UL CSA CC REV MTG	1.000 EA
G0PA1000	PKG GRP, PRINT PK1026A06	1.000 EA
MN416A01	TAG-INSTAL-MAINT no wire (1200/bx) 3/19	1.000 EA

AC Induction Motor Performance Data

Page 1 of 1



AC Induction Motor Performance Data

Record # 12246

Typical performance - not guaranteed values

Winding: 37WGY153	Type: 3735M	Enclosure: TENV
--------------------------	--------------------	------------------------

Nameplate Data			General Characteristics at 460 V, 60 Hz: High Volt Connection		
Rated Output (HP)	5		Full Load Torque	14.7 LB-FT	
Volts	230/460		Start Configuration	DOL	
Full Load Amps	13.4/6.7		Break Down Torque	54.8 LB-FT	
R.P.M.	1760		Pull-Up Torque	34.2 LB-FT	
Hz	60	Phase	3	Locked-rotor Torque	45.2 LB-FT
NEMA Design Code	B	KVA Code	H	Starting Current	54.3 Amps
Service Factor	1		No-load Current	3.4 Amps	
NEMA Nom. Eff.	89.5	P.F.	78	Line-line Res. @ 25°C.	1.55 Ohms
Rating - Duty	40C AMB-CONT		Temp. Rise @ Rated Load	87°C	
S.F. Amps			Temp. Rise @ S.F. Load		

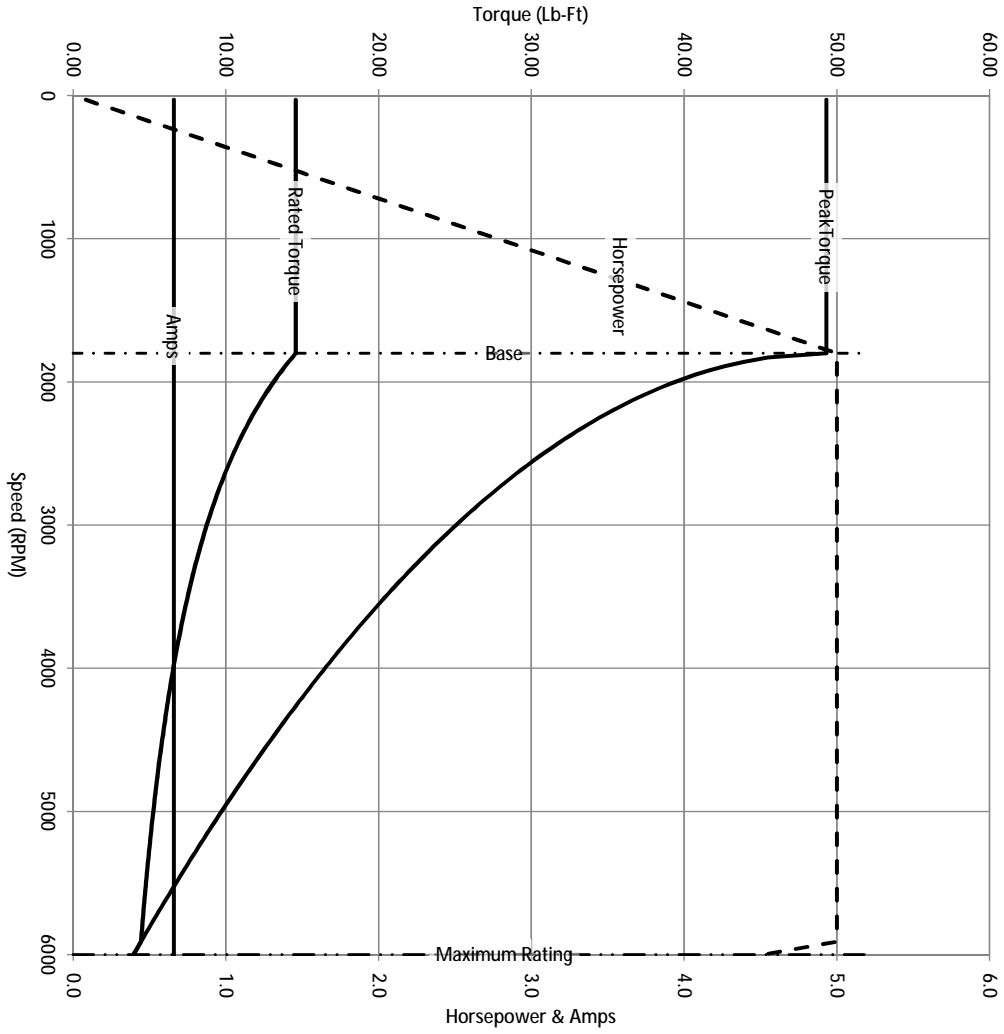
Load Characteristics at 460 Volts, 60 Hz, 5 HP

% of Rated Load	25	50	75	100	125	150	S.F.
Power Factor	38	60	71	76	80	82	
Efficiency	81.9	88.6	91.2	91.5	91.3	90.4	
Speed	1793	1787	1780	1774	1767	1759	
Line Amperes	3.7	4.6	5.5	6.6	8	9.5	

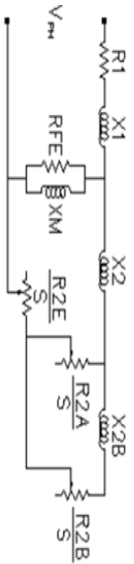
Baldor Electric Company Fort Smith, Arkansas



Catalog	ZDWNM3707T	NP VOLTS	230/460	ENCLOSURE	TENV	WE CONN EQ CRT OHMS PER PHASE (BASE RATING, 20C)
FRAME	213TC	NP AMPS	13.4/6.7	Base Volts	460	R1 0.852 X1 2.720
HP	5 HP	DUTY	Cont	Base AMPS	6.6	R2 2.280 X2 1.679
BASE SPEED	1800	MAX SAFE RPM	6000	Slip Hz	0.87	R2B 0.598 X2B 2.825
PHASE/HZ	3/60	AMB ⁰ /INSUL	40/H	WK ² (lb-ft ²)	0.734	R2E 0.175 XM1 73.662



Remarks: Calculated Data

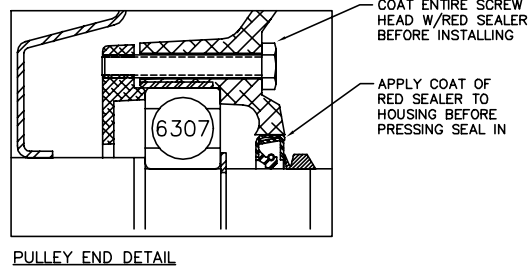
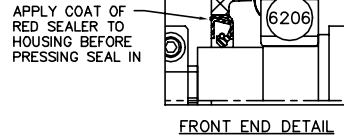
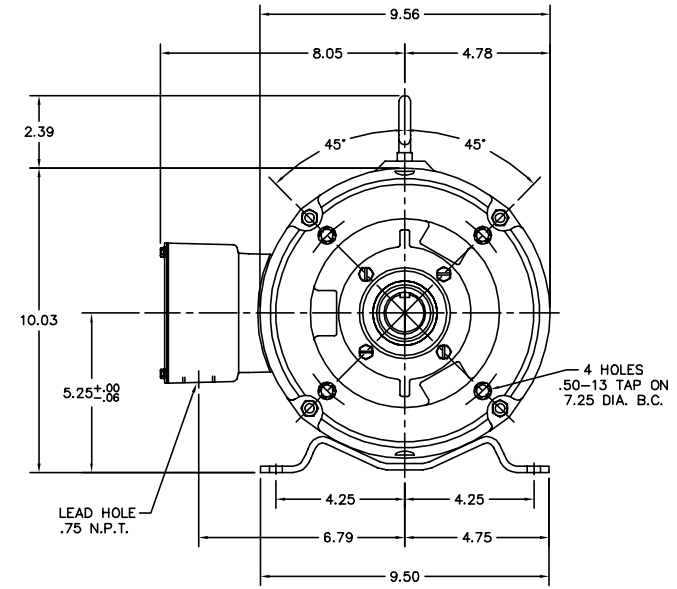
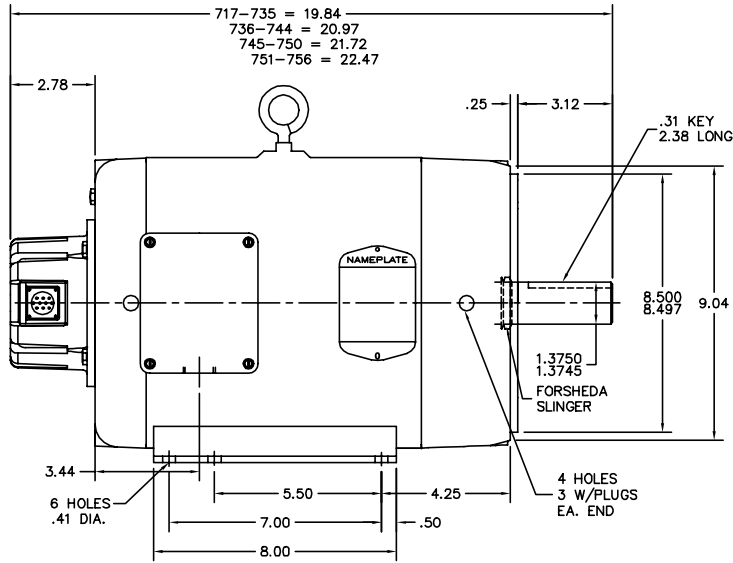


BALDOR DR BY ENR
 CK BY
 APP BY ENR
 DATE 3/6/2013

A MEMBER OF THE ABB GROUP

A-C MOTOR
 PERFORMANCE CURVES
 37H311Y153Z2
 ISSUE DATE 3/6/2013

37LYH311



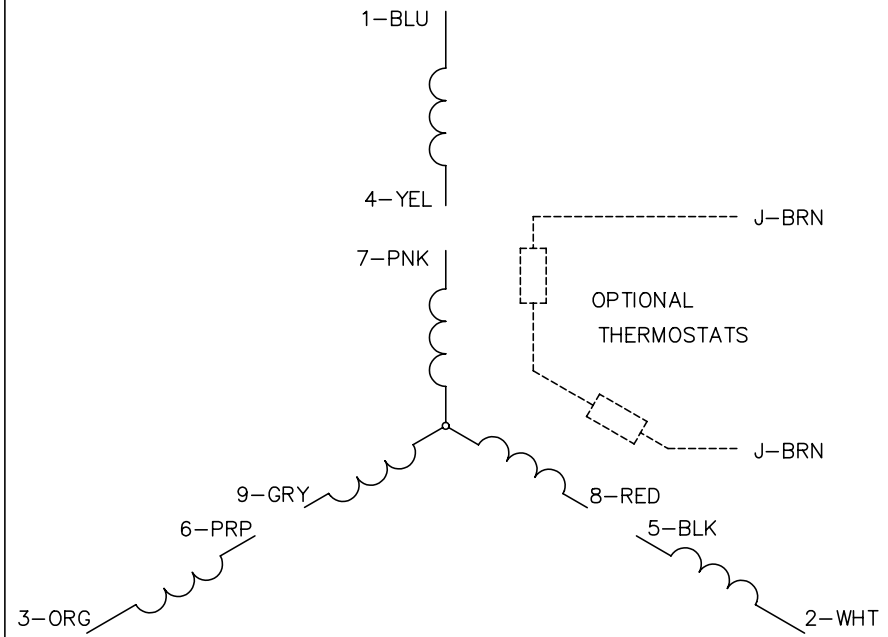
CUSTOMER IS RESPONSIBLE FOR DETERMINING THAT MOTOR PERFORMANCE IS SUITABLE IN THE APPLICATION.

REV. DESC: ADDED DRAIN PLUGS		
REV. LTR: C	VERSION: 01	TDR: 000000374458
FILE: \AAA\00071\020	REVISED: 07:08:23 08/26/2005	BY: ENKENTO
MTL: -		

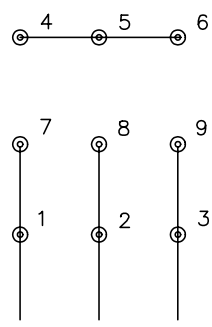
BALDOR ELECTRIC Co.
 HORZ 213-5TC TENV 37M WD (S/P #9) VECTOR (THRU-SHAFT ENCODER)

37LYH311

CD0005

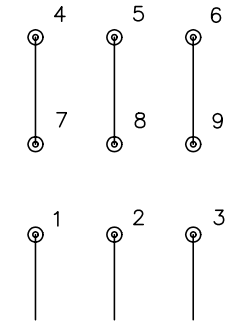


LOW VOLTAGE (2Y)



LINE

HIGH VOLTAGE (1Y)



LINE

NOTES:

1. INTERCHANGE ANY TWO LINE LEADS TO REVERSE ROTATION.
2. OPTIONAL THERMOSTATS ARE PROVIDED WHEN SPECIFIED.
3. ACTUAL NUMBER OF INTERNAL PARALLEL CIRCUITS MAY BE A MULTIPLE OF THOSE SHOWN ABOVE.
4. LEAD COLORS ARE OPTIONAL. LEADS MUST ALWAYS BE NUMBERED AS SHOWN.

REV. DESC: REVISE TO SHOW OPTIONAL COLORS			
REV. LTR: E	BY: JLP	REVISED: 01/19/99 10:15	TDR: 0171435
90000		FILE: AAA00005140	MDL: -
		MTL: -	

BALDOR ELECTRIC Co.

3PH, DV, 9 LEADS

CD0005